

# 595

for counterbalanced up-and-over doors



## ■ Ideal for residential and light commercial garages

The FAAC 595 hydraulic system is designed to lift counterbalanced up-and-over doors of residential and light commercial garages. Lifts doors with width of up to 3.5 metres. By adding another operator, the Slave version can lift doors with width of up to 5 metres.

## ■ Mechanically assembled accessories are used

The supplied installation accessories allows you to install the operator without doing any welding. The sturdy securing longitudinal member (optional) makes it possible to install the operator in the ideal position for any type of door, without any modifications to existing structures.

## ■ Maximum safety threshold

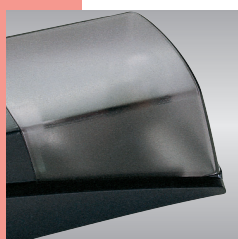
Safety is guaranteed by the exclusive hydraulic device with anti-crushing protection double by-pass valve. The anti break-in facility is provided by the opening and closing hydraulic lock, which stops the door in any position without using electric locks or bolts. In case of a power cut, a release facility from inside the garage is supplied, and another from the outside (optional), with customised key.

## ■ High-tech

FAAC 595 is supplied with the 596 MPS control board using SMT technology, which includes a high powered transformer, a connector for inserting decoding cards or radio-receiver modules, and a stop input. FAAC 596 MPS has a double function logic - automatic and semi-automatic - and enables the fail safe function for automatically verifying the efficiency of the photocells.

## ■ Integrated components

In the 595 I version, all components are integrated in an enbloc protected by ABS housing: operator, control board, timed courtesy lamp, and opening/closing push-button.



■ Ceiling light



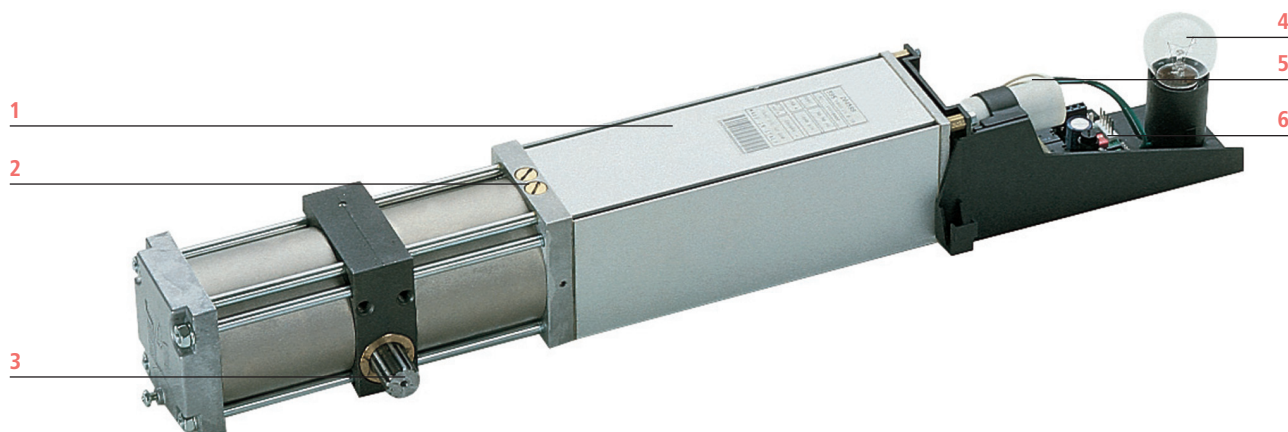
■ Opening/closing push-button



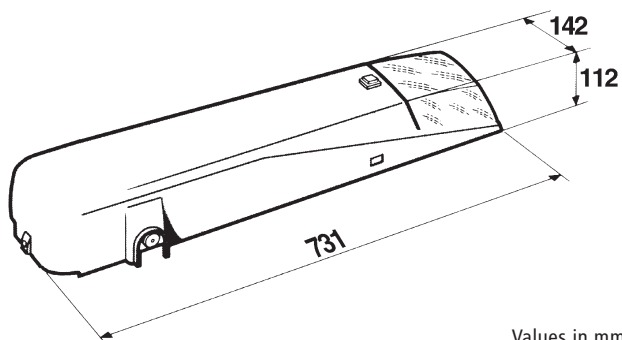
■ Carter



- 1 Hydraulic operator
- 2 By-pass valves
- 3 Transmission shaft (designed for the limit-switch kit - optional)
- 4 Courtesy lamp
- 5 Control board
- 6 Initial thrust capacitor



## DIMENSIONS



Values in mm

Technical specifications	595
Power supply	230 Vac (+6% -10%) 50 (60) Hz
Electric motor	Single-phase bi-directional
Motor rotation speed	1.400 rpm
Absorbed power	220 W
Absorbed current	1 A
Rated torque	0÷400 Nm
Angular velocity	9°15'/s
Thermal protection on motor winding	120°C
Operating ambient temperature	-40°C ÷ +55°C
Weight with oil	11 kg
Type of oil	FAAC HP OIL
Protection class	IP 31 (for internal use only)
Pump flow rate	0,75 l/min.

Specifications of 596 MPS control board	
Power supply	230 Vac (+6% -10%) 50 (60) Hz
Maximum load of motors	500 W
Accessories output	24 Vdc 360 mA max
Operating ambient temperature	-20°C ÷ +55°C
Two protection fuses	5 A electric motor 0,5 A accessories

### Programmable functions

- Function logics: automatic and semi-automatic
- Pause times
- Work times
- "Closing photocell" function logic
- Photocells fail safe

### Terminal board outputs

- Motor, power supply for accessories, timed courtesy lamp

### Terminal board inputs

- Open, stop, safety device, opening and closing limit-switch

### SMT technology

Model	Use			
	Door max dimensions W x H (m)	Door max weight (kg/sqm)	Use frequency (cycles/hour)	Control board
595 I	3,50 x 2,70	15	50	596 MPS built-in
595 SLAVE	5,00 x 3,00 (*)	15	50	/

(\*) For up-and-over doors in the width range of 3.50 a to 5.00 metres (height 3.00 m), use a 595 I operator and a 595 SLAVE. In this case, the 596MPS control board built into the 595 I also controls the 595 SLAVE.