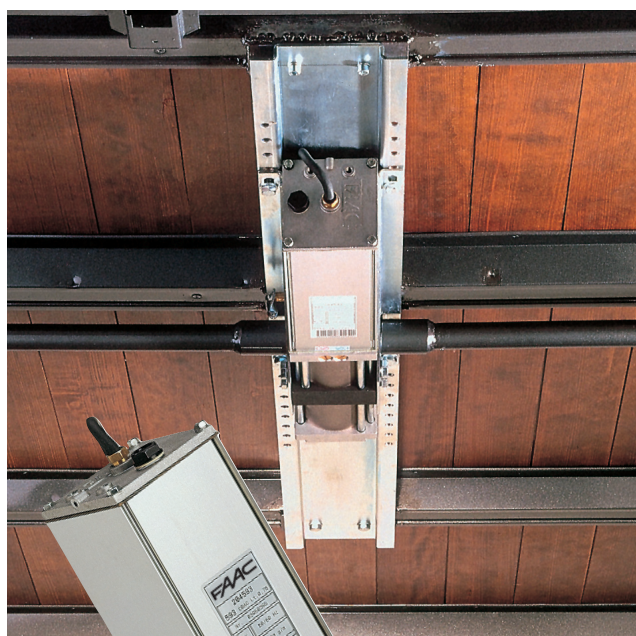


593

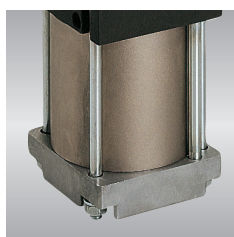
for counterbalanced up-and-over doors



Oil tank



Transmission shaft
(designed for the limit-
switch kit - optional)



Cylinder

■ Ideal for residential and light commercial garages

The FAAC 593 hydraulic system is designed to lift counterbalanced up-and-over doors of residential and light commercial garages. It is capable of lifting doors with width of up to 3.5 metres in the single operator application and up to 5 metres in the 2-operators version.

■ Mechanically assembled accessories are used

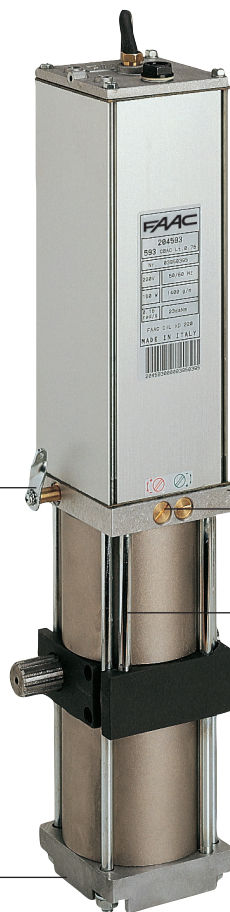
The supplied installation accessories allows you to install the operator without doing any welding. The sturdy securing longitudinal member (optional) makes it possible to install the operator in the ideal position for any type of door, without any modification to existing structures.

■ Maximum safety threshold

Safety is guaranteed by the exclusive hydraulic device with anti-crushing protection double bypass valve. The anti break-in facility is provided by the opening and closing hydraulic lock, which stops the door in any position without using electric locks or bolts. In case of a power cut, a release facility from inside the garage is supplied, and another from the outside (optional), with customised key.

■ The hydraulic system ensures efficiency

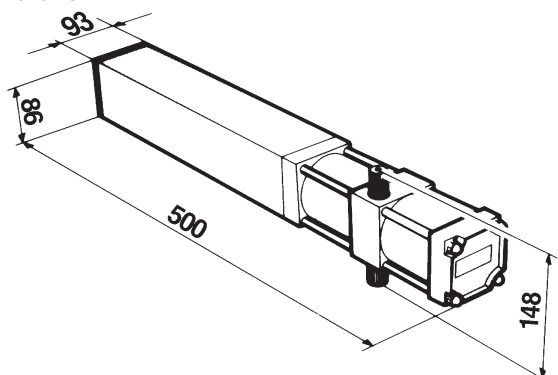
Safety, long-life, power, and silent operation are superior and constant advantages of the hydraulic system: that's why hydraulics are central to FAAC technology and to many systems ensuring a high degree of operational and service reliability. The oil re-circulation system enables smoother long-term performances, also prolonging operator life.



- 1 Manual release
- 2 Distribution flange
- 3 By-pass valves (cannot be accessed thanks to the supplied "tamper-proof" system)
- 4 Oil re-circulation tube
- 5 Lower flange



DIMENSIONS



Values in mm

Technical specifications	593
Power supply	230 Vac (+6% -10%) 50 (60) Hz
Electric motor	Single-phase bi-directional
Motor rotation speed	1.400 rpm
Absorbed power	220 W
Absorbed current	1 A
Rated torque	0÷400 Nm
Angular velocity	9°15"/s
Thermal protection on motor winding	120°C
Operating ambient temperature	-40°C ÷ +55°C
Weight with oil	10 kg
Type of oil	FAAC HP OIL
Protection class	IP 55
Pump flow rate	0,75 l/min.

Specifications of 596 MPS control board

Power supply	230 Vac (+6% -10%) 50 (60) Hz
Maximum load of motors	500 W
Accessories output	24 Vdc 360 mA max
Operating ambient temperature	-20°C ÷ +55°C
Two protection fuses	5 A electric motor 0,5 A accessories
Enclosure dimensions mod. E	204 x 265 x 85 mm (LxHxD)
Protection class	IP 55

Programmable functions

- Function logics: automatic and semi-automatic
- Pause times
- Work times
- "Closing photocell" function logic
- Photocells fail safe

Terminal board outputs

- Motor, power supply for accessories, timed courtesy lamp

Terminal board inputs

- Open, stop, safety device, opening and closing limit-switch

SMT technology

Model	Use			
	Door max dimensions W x H (m)	Door max weight (kg/sqm)	Use frequency (cycles/hour)	Control board
593	3,50 x 2,70 5,00 x 3,00 (with two operators)	15	50	Not included